



SOFT
NONWOVENS

Lutrasil[®]

AGRICULTURAL

**POLYPROPYLENE
NONWOVEN**

LUTRASIL® PRO

The historical brand of cropcover nonwoven represents reliability and quality. Chosen by agriculture entrepreneurs from all around the world, Lutrasil ensure the best protection to harvests.

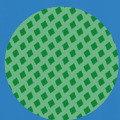


PROPERTIES AND FEATURES

- Excellent durability to sunlight, strength and tear resistance and high elasticity
 - Strong and long lasting junctions
 - A flexible crop covering resistant to high winds and hard weather
 - Protection climate barrier for all crops
 - Excellent water permeability, limited water retention, thereby minimizing any damage to the crop below
 - Optimum protection against pests
 - Balanced temperature and humidity distribution
-
- Available in 19, 23 and 30 gms/m² for crop covering
 - Available in width from 1 to 28.5 m and length from 100 to 1250 m
 - Supplied in rolls packed in 1.60, 2.05 and 2.25 m width
 - Standard width and length always available in warehouse
 - No minimum quantity deliveries, full trucks loadings up to 10 Tons
 - Available in neutral color for crop covering and in the new Boosting Green on demand



Neutral

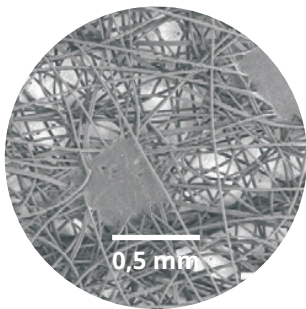


Boosting Green



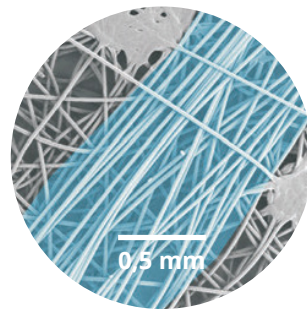
TECHNOLOGY

The intelligent combination of endless filaments providing strength together with climate control. Polypropylene properties are providing climate control in creating the best growth conditions for crops. Strong continuous fibres ensure high durability and strength in all directions.



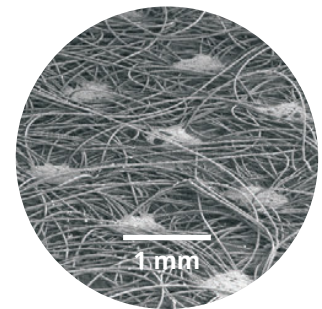
Polypropylene fibres providing climate control

+



The strength of continuous filaments

=



Lutrasil® Pro

SUITABLE FOR ALL APPLICATIONS




PRODUCT	APPLICATION	VARIETY
	Earlier harvests Frost protection Protection against insects and pests Cold barrier in plastic tunnels and greenhouses	Vegetable crops Lawns Ornamental plants Vegetable crops Young plants
	Earlier harvests Frost protection Lightweight winter covering	Vegetable crops in particular potatoes and strawberries
	Winter covering Providing shade	Vegetable crops Ornamental plants Herbaceous plants Tree nurseries

PRO X (REINFORCED) AND BOOSTING GREEN

Lutrasil Pro is perfect for customers who want a high performance membrane to cover their seedlings from cold and frost in order to harvest ripe fruits and vegetables in advance. The reinforced nonwoven of Lutrasil X was developed with additional nonwoven bands to ensure high resistance protection to crops where the wind and the hard weather threaten the growth of customer's harvests. The lateral bands are available in 400 or 600 mm obtained by calendaring bands of 17 gr / m² in order

to have with 19 gr/m² a final reinforced edge of 36 gr/m² and with 23 gr/m² a final reinforced edge of 40 gr/m². Born to increase the performance of Lutrasil, Boosting Green, the innovative green nonwoven boosts the growth of seedlings and to increase the quality of the final products. The perfect color shade was obtained after studies on hundreds of different vegetables and fruits in order to let only the right sunlight rays across.

MATERIAL AVAILABILITY

PRODUCT	width m	length 100 m	length 250 m	length 500 m	length 1000 m
	4,25	◆	✓	◆	◆
	6,40	◆	✓	◆	◆
	8,00	◆	✓	◆	◆
	8,50	◆	✓	◆	◆
	10,50	◆	✓	✓	◆
	11,00	◆	◆	◆	◆
	12,00	◆	✓	◆	◆
	12,80	◆	✓	✓	◆
	13,60	◆	✓	◆	–
	14,80	◆	◆	◆	–
	16,00	◆	✓	◆	–
	17,00	◆	✓	◆	–
	20,50	◆	◆	◆	–
	10,50	◆	✓	◆	◆
	12,00	◆	◆	◆	–
	12,80	◆	✓	◆	–
	13,60	◆	◆	◆	–
	16,00	◆	◆	◆	–
	4,25	◆	✓	–	–
	6,40	◆	✓	–	–
	10,50	◆	✓	–	–
	12,80	◆	◆	–	–

X WITH REINFORCEMENT ◆ ON REQUEST ✓ ON STOCK

Special dimension on request according to our guidelines


INSTRUCTIONS FOR USE

When using as covering material, Lutrasil® Pro spunbonded should not be compared to other products such as perforated plastic or textile materials. Lutrasil® Pro spunbonded provide distinct advantages for horticultural applications on account of their physical and mechanical properties.

- | | | |
|---|---|--|
| 1. HANDLING
LUTRASIL® PRO
SPUNBONDED | Lutrasil® Pro is spread out on cultivated fields immediately after sowing or planting. This can be carried out either manually, or semi-mechanically using an unwinding (roller) device on a tractor. Lutrasil® Pro should be spread out loosely to allow enough room for the plants to grow to their full height, but without any creases in the material. Weight the edges of Lutrasil® Pro down with soil or | small bags filled with soil or pebbles.
Note: It is absolutely essential that in the case of plants needing pollination (e.g. strawberries) Lutrasil® Pro is re-moved for a long enough period while they are in bloom. Once pollination is over the plants can be covered up again. |
| 2. FERTILISERS | Lutrasil® Pro spunbonded are not harmful to the environment and support eco-friendly methods of cultivation. Fertilisers can be used sparingly while maintaining a constant yield thanks to the high conversion of nutrients in the soil. Leaching of nitrates is substantially | avoided. By applying fertilisers sparingly you can obtain optimum crop weights in spite of a reduction in the nitrate content of the plant. |
| 3. SPRAYING
PLANTS | Note: Avoid spraying with pesticides at all times, since they may have a very detrimental effect on the effectiveness of the UV stabiliser in Lutrasil® Pro. | This applies to all covering materials made of polypropylene and is therefore generally inadvisable. |
| 4. REMOVING
LUTRASIL® PRO | Lutrasil® Pro should be removed when the weather is dry and calm. If the soil is heavy or wet make sure that the earth weighing down | the material is loosened before removal. |
| 5. STORING | We recommend storing Lutrasil® Pro in a dry, dark and well aerated room. | |
| 6. DISPOSAL | After use, Lutrasil® Pro can be disposed of in a refuse incineration plant or at a refuse tip without risk of polluting the environment for a long time. Lutrasil® Pro spunlaid therefore | make an active contribution to environmental protection in horticulture and agriculture. |
| 7. PRODUCT
LIABILITY
INFORMATION | All technical information given are based on carefully evaluated laboratory work and production tests as well as on extensive experience and are reliable to the best of our knowledge. Because of the variations in | methods, conditions and equipment used commercially we strongly recommend that customers make their own tests to determine the suitability of our products for their own purposes. |

Sole responsibility for use and application of our products, as well as for any further processing operations, shall be borne by the client. Any information provided in our documents with regard to the application, function and/or possible uses of our products, even as part of our specifications, shall be deemed as merely non-binding information and standard values. Such data shall provide, in particular, no basis whatsoever for liability and can, on no account, be applied to any other operating conditions than those stated here.





Soft Nonwoven, established in 1974, is an Italian company specialized in production and distribution of 100% polypropylene spunbonded nonwoven for industrial applications as roofing, building materials, filtration, agriculture, automotive, medical, hygiene, furniture, bedding, packaging, Ho.Re.Ca, protective and sportswear. Soft Nonwoven is a vertical organization and all production stages, are directly and entirely executed in Quaregna Cerreto headquarter, in North Western Italy, using the best raw materials available on the market. Thanks to its special technology, Soft Nonwoven is able to design and manufacture highly isotropic nonwoven that position the company in the high-end market for the quality of materials and services.

SOFT NW S.r.l.

Tel +39 015 882200 - Fax +39 015 882135

softnw@softnw.com - www.softnw.com

Via Piave, 5 - 13854 Quaregna Cerreto (BI) - Italy

C.F. 12952980154 - P.IVA 01984800027



SOFT
NONWOVENS